



### **Tarkett Wetroom System**

Tarkett's Wetroom system is the ideal solution for wet environments in areas from healthcare to student halls and sports centres. A complete system incorporating floor and wallcoverings and a full range of accessories including drains, threshold strips, sleeves etc. The floor and wallcoverings are hot welded for a durable, hardwearing and completely watertight finish that exceed all existing standards for water resistance.

Granit Multisafe with a studded surface and Aquarelle Wall HFS with fire retardant properties are colour coordinated. Safetred Aqua colours have also been developed to perfectly match Aquarelle Wall HFS.

Aquarelle Floor and Aquarelle Wall and borders have been developed to match together and are suitable for any type of environment.

# WETROOM FLOOR AND WALL COVERINGS

VINYL

Granit Multisafe p. 224-225

iQ Optima 1.5 mm p. 226-227

Safetred Aqua p. 228-229

Aquarelle Floor p. 230-231


Aquarelle Wall HFS p. 234-235

Aquarelle Wall/  
Borders p. 236-239

# WETROOM FLOORS



- └ *Unique concept: floors, walls and accessories available*
- └ *Hygienic and easy to maintain*

Technical data		Granit Multisafe	iQ Optima 1.5 mm	Aquarelle Floor
<b>Classification</b>	EN 685 commercial industrial  UPEC Classification NF UPEC certificate number (Ref NF189)	Classes: 31  U4 P3 E2/3 C2 312-013.1	Classes: 32 41	Classes: 31
<b>Polyurethane reinforcement (PUR)</b>			Yes	No
<b>Total thickness</b>	EN 428	2.50 mm	1.50 mm	1.50 mm
<b>Wear layer thickness</b>	EN 429	2.00 mm	1.50 mm	0.35 mm
<b>Total weight</b>	EN 430	3 060 g/m <sup>2</sup>	2 100 g/m <sup>2</sup>	2 400 g/m <sup>2</sup>
<b>Abrasion group Thickness loss Volume loss</b>	EN 660-1 EN 660-2	Group P: ≤ 0.15 mm Group P: ≤ 4.0 mm <sup>3</sup>	Group P: ≤ 0.15 mm Group P: ≤ 4.0 mm <sup>3</sup>	T ≤ 0.08 mm
<b>Static indentation</b>	EN 433	Approx. 0.03 mm	Approx. 0.03 mm	≤ 0.10 mm
<b>Dimensional stability</b>	EN 434	≤ 0.40 %	≤ 0.40 %	≤ 1.20 mm
<b>Curl resultant to heat</b>	EN 424	-	-	≤ 8 mm
<b>Castor wheel chair</b>	EN 425		Suitable	No damage
<b>Reaction to fire</b>	EN 13501-1  EN ISO 9239-1 EB ISO 11925-2 NI FIRE 007	B <sub>fl</sub> s1	B <sub>fl</sub> s1  ≥ 8 kW/m <sup>2</sup> Pass Class G	B <sub>fl</sub> s1 glued over any A2 <sub>fl</sub> or A1 <sub>fl</sub> substrate
<b>Marine equipment</b>	IMO FTPC Part 5 and 2 IMO Res. A653			
<b>Slip resistance</b>	DIN 51130 EN 13893	R10 μ ≥ 0.3	R9 ≥ 0.3	R9 ≥ 0.3
<b>Bare foot test</b>	DIN 51097	Class C (27°)		-
<b>Seam strength (N/50 mm)</b>	EN 684 EN 680	- -	- ≥ 240	-
<b>Static electrical charge</b>	EN 1081 EN 1815	Approx 10 <sup>10</sup> ohms < 2 kV	< 2 kV	-
<b>Impact sound reduction</b>	EN ISO 140-8 EN 717/2	ΔL <sub>w</sub> = approx. + 4 dB	Approx. + 4 dB	ΔL <sub>w</sub> = 2 dB
<b>Light fastness</b>	EN ISO 105-B02		≥ 6	≥ 6
<b>Chemical resistance</b>	EN 423	Good resistance	Good resistance	Good resistance
<b>Fungi and bacteria resistance</b>	NF EN ISO 846 DIN EN ISO 846-A/C	Does not favour growth	Does not favour growth	Sanitized
<b>Thermal resistance Underfloor heating</b>	EN 12524	0.013 m <sup>2</sup> K/W Suitable - max 27 °C	0.015 m <sup>2</sup> K/W Suitable - max 27 °C	0.01 m <sup>2</sup> K/W Suitable
<b>Colours</b>		12	10	17
<b>Form of delivery</b>	EN 426	Rolls: 25 lm x 2 m	Rolls: 30 lm x 2 m	

The above information is subject to modifications for the benefit of further improvement (01/2010).  
For more detailed technical information, please contact Tarkett.

Technical data		Safetred Aqua
<b>Certification</b>	EN 685 domestic commercial industrial  EN 13845	Classes: 23 32  ESb
<b>Total thickness</b>	EN 428	2.00 mm
<b>Total weight</b>	EN 430	3 000 g/m <sup>2</sup>
<b>Safety Clean PUR Reinforcement</b>		Yes
<b>Abrasion</b>	EN 660-2	< 10% particle loss
<b>Static indentation</b>	EN 433	< 0.10 mm
<b>Furniture leg</b>	EN 424	No damage
<b>Castor chair</b>	EN 425	No damage
<b>Dimensional stability</b>	EN 434	≤ 0.25%
<b>Curl resultant to heat</b>	EN 434	≤ 3 mm
<b>Flame and smoke</b>	EN 13501-1 ISO 9239-1 IMO A653	B <sub>fl</sub> s1 with acrylic adhesive on wood > 8 kW/m <sup>2</sup>
<b>Slip resistance</b>	TRRL Pendulum 4S (Wet) DIN 51130 Surface roughness DIN 51097	> 36  R11 > 30 μm C
<b>Electrical resistance</b>	EN 1815 EN 1081 EN 14041	2 kV on concrete > 10 <sup>10</sup> ohms Antistatic
<b>Impact sound reduction</b>	EN ISO 140-8 EN ISO 717/2 ΔL <sub>w</sub>	6 dB
<b>Acoustic improvement</b>	NF S 31-074 Ln,e,w	74 dB
<b>Light fastness</b>	EN ISO 105-B02	6
<b>Chemical resistance</b>	EN 423	Good resistance to everyday substances
<b>Anti fungi treatment</b>		Incorporates a biostat to resist fungi and bacterial growth
<b>Thermal resistance Underfloor heating</b>	EN 12524	0.01 m <sup>2</sup> K/W Suitable
<b>Colours</b>		12
<b>Form of delivery</b>	EN 426	Rolls: 20 lm x 2 m

Granit Multisafe pages 224-225

iQ Optima 1.5 mm pages 226-227

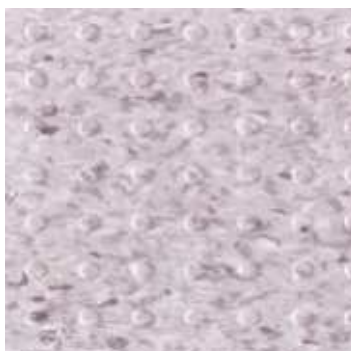
Safetred Aqua pages 228-229

Aquarelle Floor pages 230-231

# Granit Multisafe

- └ Waterproof installation, ideal for wet commercial applications
- └ Studded surface for excellent slip resistance
- └ 3 colour atmospheres designed for well being
- └ Unique concept: walls, floors and accessories available (compatible with Aquarelle Wall HFS)
- └ Hygienic and easy to maintain





3476 333



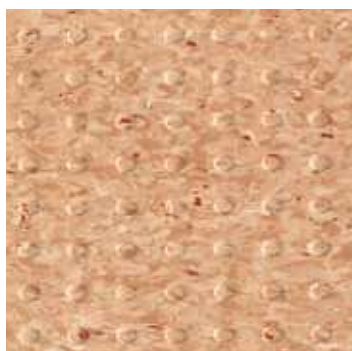
3476 782



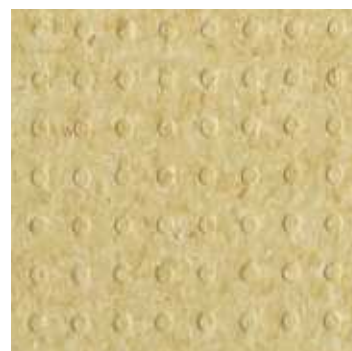
3476 383



3476 770



3476 334



3476 772



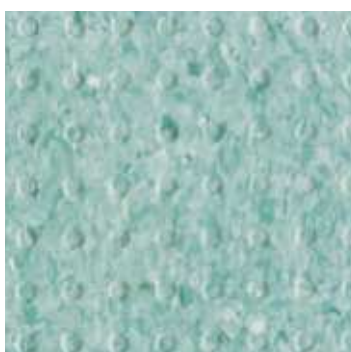
3476 335



3476 332



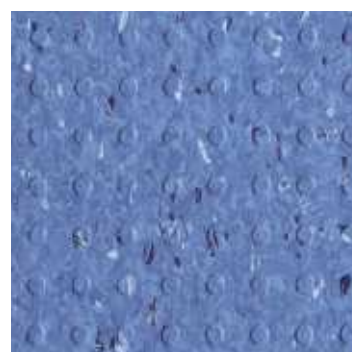
3476 779



3476 331



3476 776





3476 379

# iQ Optima 1.5 mm

- └ *Elegant*
- └ *10 colourways, allowing for great colour choice*
- └ *1.5 mm version: ideal as wallcovering, installed vertically or horizontally for fewer seams*
- └ *iQ products - Unique Surface Restoration*
- └ *Quality and composition of the whole construction give superior cleaning characteristics*
- └ *Best life cycle cost*



CE	EN 14041:2004	Manufactured by:
		Tarkett AB
		SE-372 81 Romneby SWEDEN
		EN 649 iQ Optima 1.5

			
According to European Classification EN 685			



3247 821



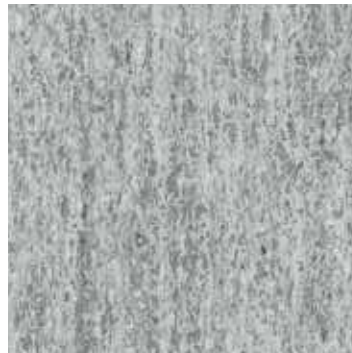
3247 825



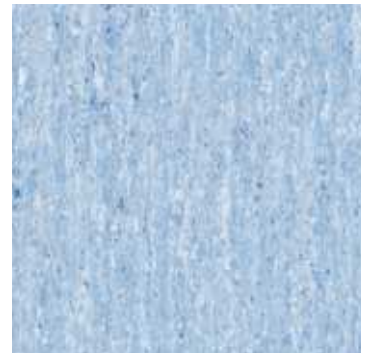
3247 836



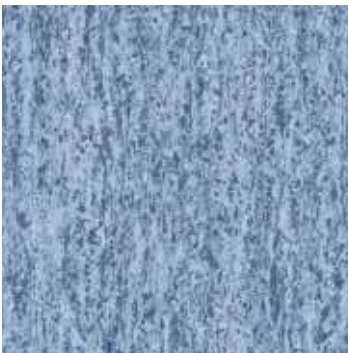
3247 850



3247 853



3247 856



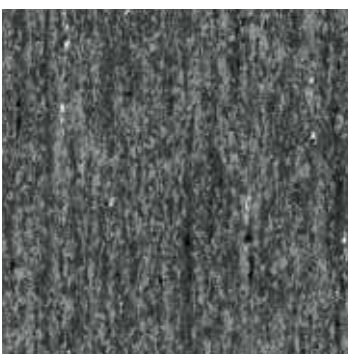
3247 857



3247 862



3247 864






3247 866


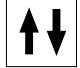
# Safetred Aqua

- └ R11 slip resistance for superb performance in wet areas
- └ Bare foot comfort in wet areas
- └ Safety Clean XP surface for ease of maintenance
- └ Improved flexibility for ease of installation in falls and drains
- └ Sustainable slip resistance throughout product life
- └ Incorporates Biostat to help prevent biological and fungal growth



 0338-CPD-1002	EN 14041:2004 	Manufactured by: Tarkett Ltd Lenham, Maidstone Kent ME17 2QX UNITED KINGDOM EN 13845 Safetred Aqua
		

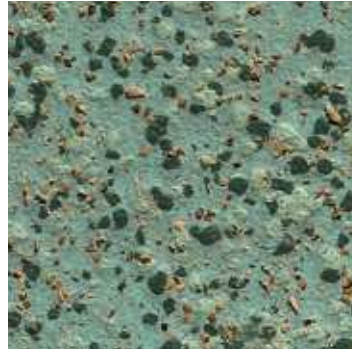
 2000	 3000
According to European Classification EN 685	

	
--	--



Wallaby

3816 100



Fox

3816 101



Cheetah

3816 103



Tapir

3816 106



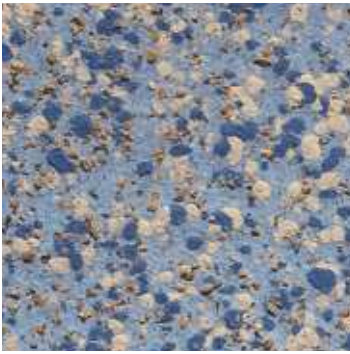
Gazelle

3816 107



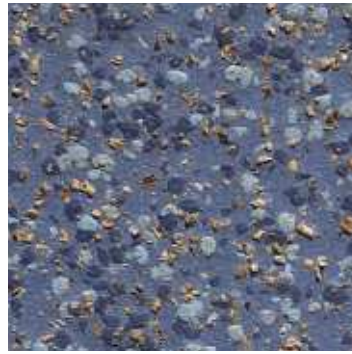
Koala

3816 108



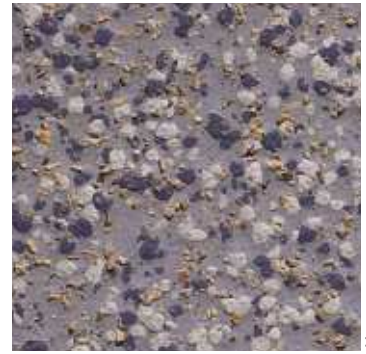
Vole

3816 110



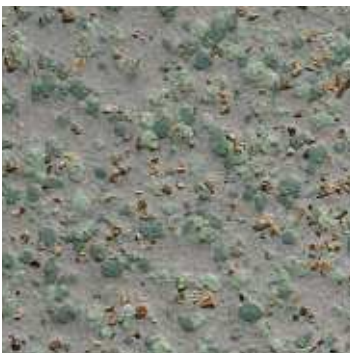
Elk

3816 111



Marmoset

3816 112



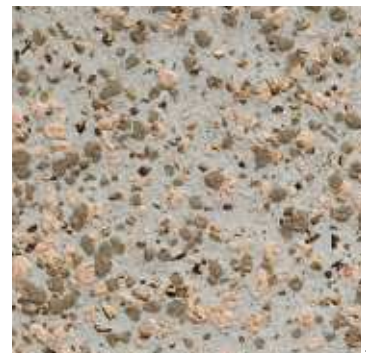
Otter

3816 113



Antelope

3816 116



Lynx

3816 119

# Aquarelle Floor

- └ Waterproof installation, ideal for wet domestic applications
- └ Unique concept: floors, walls and accessories available (compatible with Granit and/or Aquarelle Wetwall)
- └ Fresh colours and modern designs
- └ Hygienic and easy to maintain
- └ Easy, low-cost maintenance
- └ TopClean PUR-reinforced
- └ Glass fibre non-woven reinforcement: unique dimensional stability





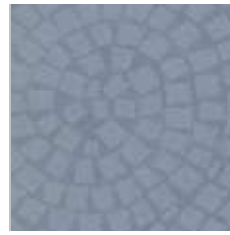
3851 001



3851 002



3851 003



3851 006



3851 007



3851 009



3851 010



3851 013



3851 014



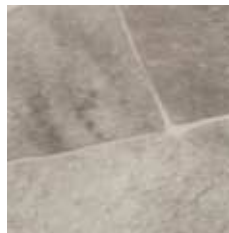
3851 015



3851 016



3851 017



3851 018



3851 019



3851 020



3851 021



3851 022